

WICOMICO INDUSTRIAL CENTER

1601-1629 WICOMICO STREET, BALTIMORE, MARYLAND 21230

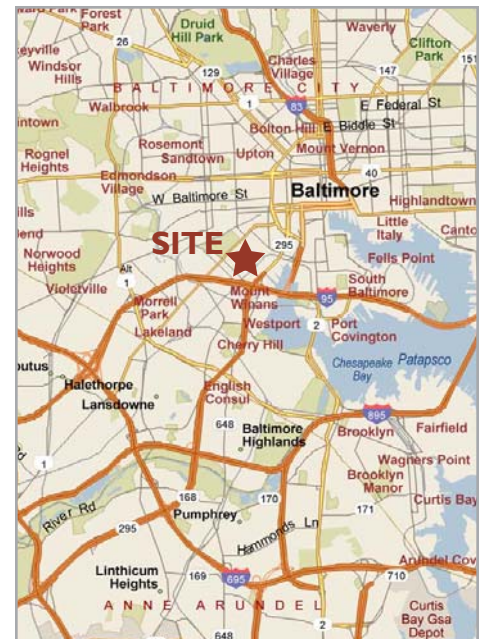


FOR LEASE
LOCATED WITHIN ENTERPRISE EMPOWERMENT
ZONE AND FOCUS AREA

Conveniently Located in the Carroll Camden Industrial Park

FEATURES

- 156,158± SF Manufacturing / Warehouse / Distribution Space
- Total Building Size: 343,719 SF
- Originally Built in 1942
- Ceiling Height: 40'± Clear
- 5 Interior Loading Docks - One Ramped Drive-In
- Crane Served (3 - 10 Ton Overhead Cranes)
- Heavy Power: 13,200 Volts - 3 Transformers
- M-3 Zoning (Baltimore City)
- Column Spacing: 25'-38' Wide x 35' x 100' Deep
- Gas Fired Air Rotation Heating Units
- Fluorescent Lighting
- Potential Trailer Storage on Fenced Lot
- Public Utilities
- Inspection: By Appointment Only
- \$2.95 PSF, Triple Net
- Wet Sprinklered



FOR MORE INFORMATION CONTACT:

K. Alan Orman

410.953.6682

aorman@collierspinkard.com

Robert D. Oare

410.953.6684

roare@collierspinkard.com

J. Andrew Faraone

410.953.6681

afaraone@collierspinkard.com

**COLLIERS
PINKARD**

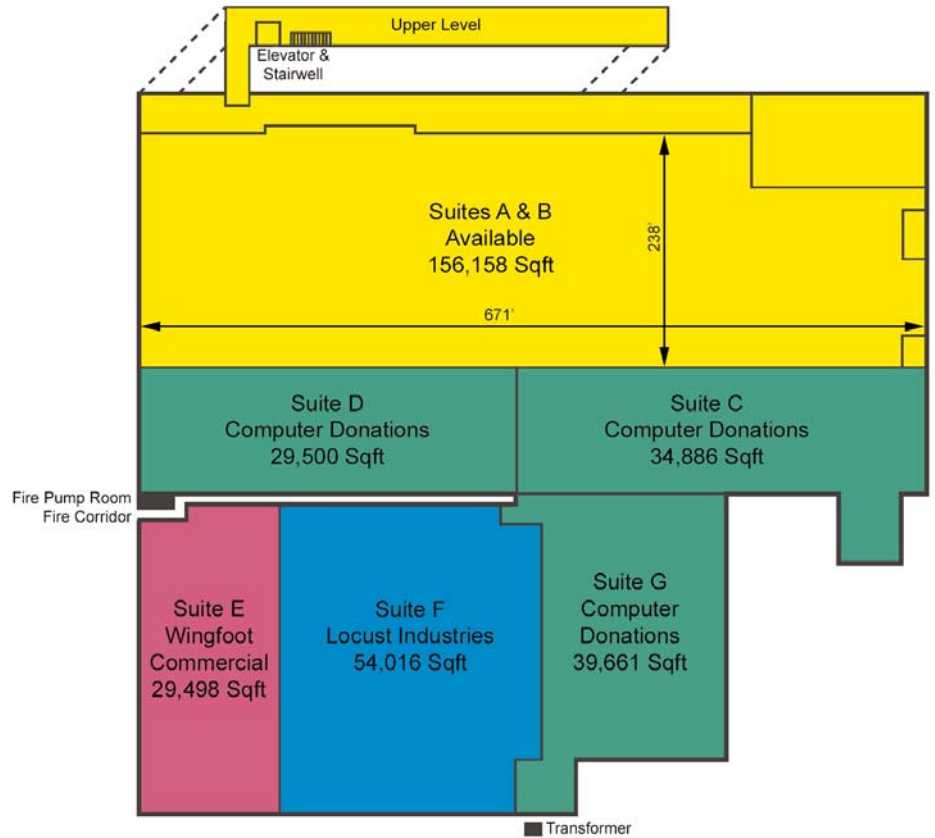
WWW.COLLIERSPINKARD.COM

Information furnished regarding property is from sources deemed reliable, but no warranty or representation is made to the accuracy thereof. Colliers International is a worldwide affiliation of independently owned and operated companies.

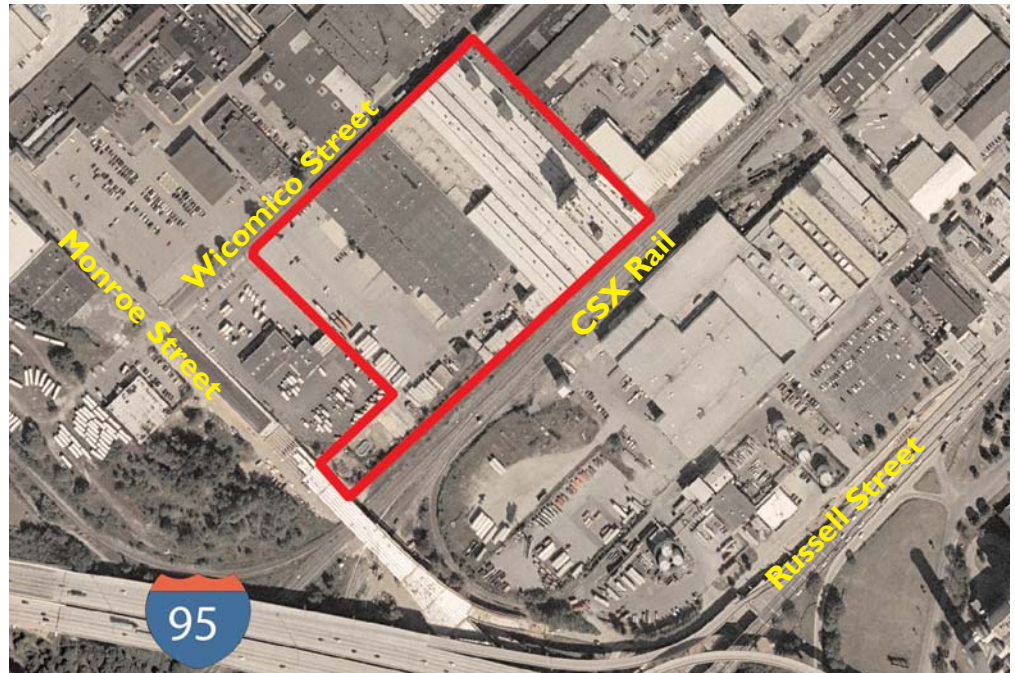
WICOMICO INDUSTRIAL CENTER

1601-1629 WICOMICO STREET, BALTIMORE, MARYLAND 21230

FLOOR PLAN



AERIAL



FOR MORE INFORMATION CONTACT:

K. Alan Orman

410.953.6682

aorman@collierspinkard.com

Robert D. Oare

410.953.6684

roare@collierspinkard.com

J. Andrew Faraone

410.953.6681

afaraone@collierspinkard.com

COLLIERS
PINKARD

Information furnished regarding property is from sources deemed reliable, but no warranty or representation is made to the accuracy thereof. Colliers International is a worldwide affiliation of independently owned and operated companies.

WWW.COLLIERSPINKARD.COM